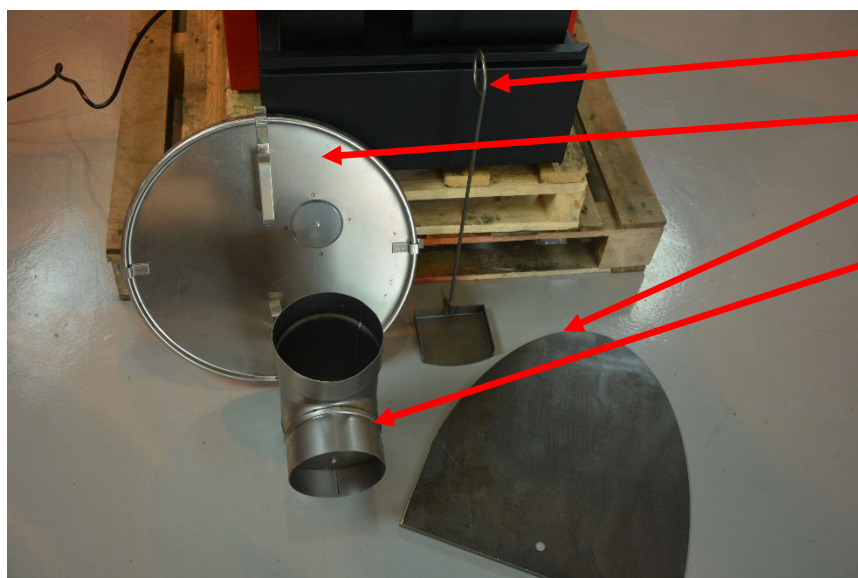


## QUICK GUIDE: MULTI-OIL HEATERS

Please refer to the manual for details. This guide supplements but does not replace the Operating Instructions.

### Step 1 – unpack components from the chamber



Ash cleaning pan

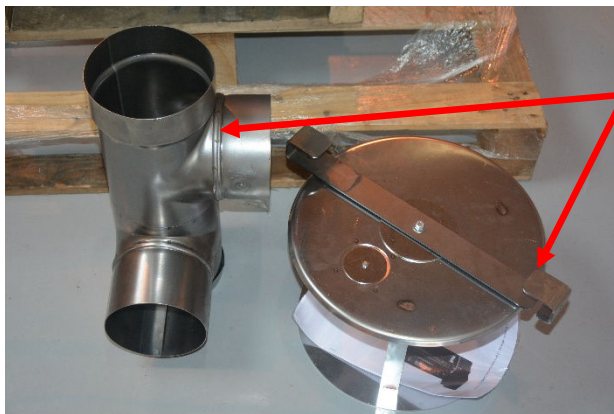
Lid

Deflector

Draft stabiliser



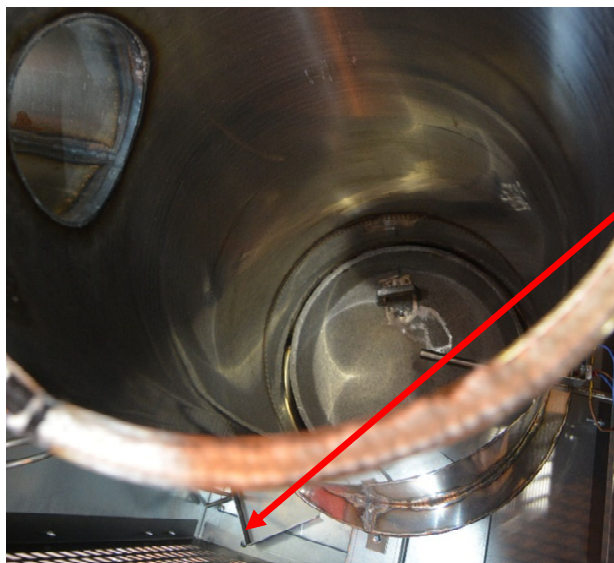
**ZM-135T**



Integrated lid / deflector

Draft stabiliser

Please note: the ash pan will be between the chamber and the side panels inside the heater and should be removed.



See below, when viewed from above:

Ash pan

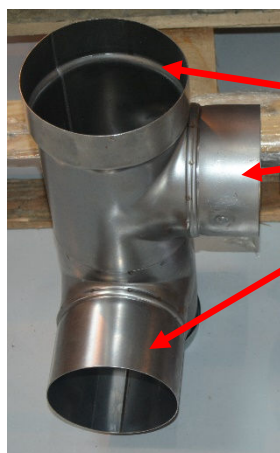




## Step 2 – connect the flue

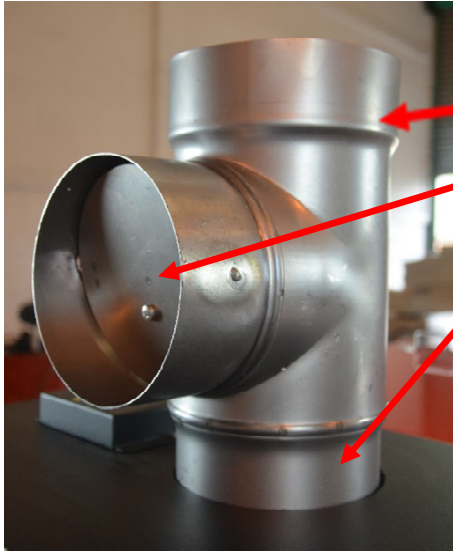
**Important:** you must fit the draft stabiliser first. The stabiliser has two 'open' ends and one with a moving 'flap'. The narrower open end connects to the heater. The flap is left on a mini-branch to draw in air, the wider open end connects to the flue.

You must use suitable 150mm stainless steel flue for these heaters.



### For ZM-130 / ZM-135T – elbow type stabiliser

- Wider 'open' end connects to flue
- Draft stabiliser 'flap' is left to branch off
- Narrower 'open' end connects to heater



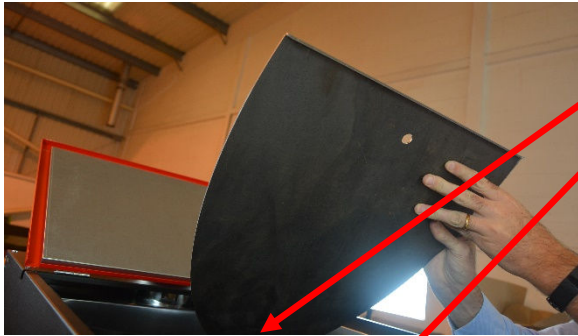
**For ZM-150 – inline type stabiliser**

- Wider 'open' end connects to flue
- Draft stabiliser 'flap' is left to branch off
- Narrower 'open' end connects to heater



### Step 3 – understand the configuration of the internal components

**ZM-135T** has no internal components as the deflector is attached to the lid.

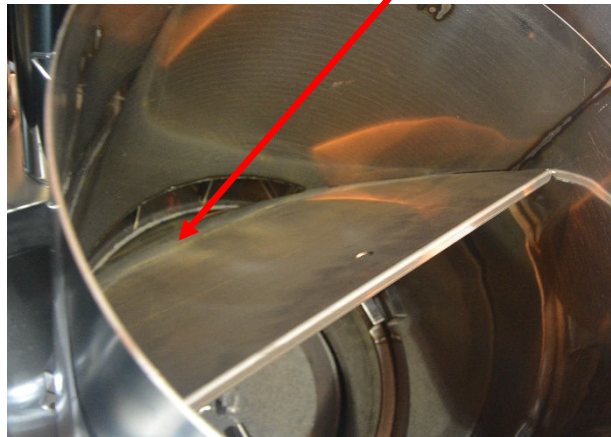


**For ZM-150 – insert deflector so that :**

The deflector's narrow end points downwards

Whilst the long straight edge faces forwards

When positioned correctly, the narrow end rests just below the exhaust outlet



For **ZM-130** – the 'top hat' components shown above rest on the ring, the ring in turns rests upon 3 small pags located around half way up the combustion chamber.

Cylinder ('top hat' top)

Deflector ('top hat' base)

Ring

